

**WALL MOUNT ENCLOSURES & ACCESSORIES**

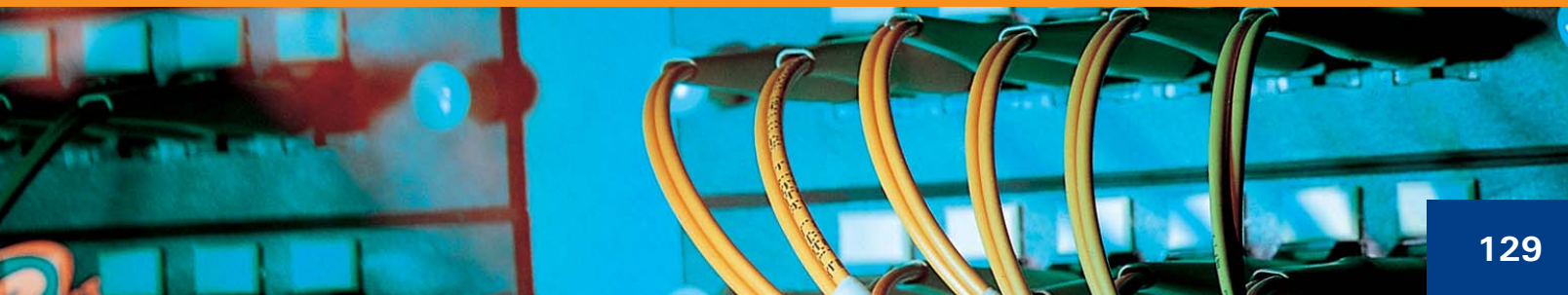
Unloaded Wall Mount Enclosures ..... 130  
 Unloaded Wall Mount Patch Enclosures ..... 131  
 Unloaded Wall Mount Splice and Patch Enclosures ..... 132  
 Splice Trays and Accessories ..... 132  
 Loaded Wall Mount Patch Enclosures ..... 133  
 Loaded Wall Mount Splice and Patch Enclosures ..... 133

2.6

**Chapter Summary**

- Wall mount enclosures provide options for remote placement and protection of fiber terminations
- Complete line of connectivity, splice and size options - up to 96 fibers
- Hold the AMP NETCONNECT product line of Snap-in Adapter Plates and MPO Cassettes
- Mix and match snap-in adapter plates to accommodate multiple connector types
- Loaded enclosures include pre-mounted SC Duplex or ST Adapters
- Rack mount enclosures

2.6



129

### Single Sided, Single Door Wall Mount Patch Enclosure



Description	Part Number
Double Adapter Plate Wall Mount Patch Enclosure	1278323-2
Optional Lock	559501-2
Replacement Cable Grommets	559496-2

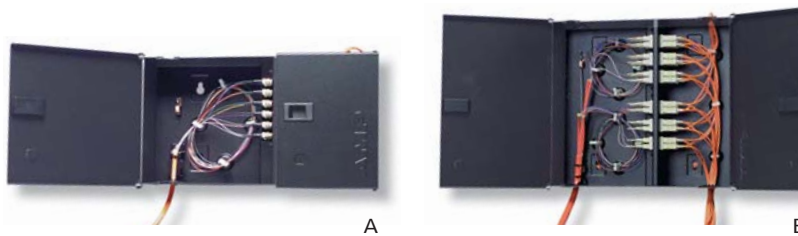
#### Fiber Densities

Insert Type	Fiber Density (max)	Duplex Port Density (max)
6-Fiber Adapter Plates	12	6
12-Fiber Adapter Plates or MPO Cassettes	24	12
24-Fiber Adapter Plates or MPO Cassettes	48	24

#### Product Facts

- Accepts two snap-in adapter plates or MPO Cassettes (see this Chapter and 2.4, not included)
- Top and bottom cable entries feature integral rubber cable grommets
- Reversible cable strain relief bracket
- Internal cable management
- Fiber loop storage and management
- Recessed, easy-to-use door latch
- Optional lock package for added security
- Designed for use in protected areas
  - Allows access to adapter ports even when door closed
- Nominal dimensions: 8" (20cm) H x 4" (10cm) D x 8" (20cm) W

### Double Sided, Double Door Wall Mount Patch Enclosure



Description	Adapter Plate Capacity		Part Number
	Figure	Figure	
Double Sided, Double Door Wall Mount Enclosures	2	A	559560-2
	4	B	559561-2
	4	-	559561-3
Optional Lock			559501-2
Replacement Cable Grommets			559496-2

#### Fiber Densities

Insert Type	Two Adapter Plate		Four Adapter Plate	
	Fiber Count (max)	Duplex Port Density (max)	Fiber Count (max)	Duplex Port Density (max)
6-Fiber Adapter Plates	12	6	24	12
12-Fiber Adapter Plates or MPO Cassettes	24	12	48	24
24-Fiber Adapter Plates or MPO Cassettes	48	24	96	48

#### Product Facts

- Accepts two or four snap-in adapter plates or MPO Cassettes (see this Chapter and 2.4, not included)
- Top and bottom cable entries feature integral rubber cable grommets
- Reversible cable strain relief bracket
- Internal cable management
- Fiber loop storage and management
- Recessed, easy-to-use door latches
- Optional lock package for added security
- Designed for indoor use
- Doors prevent access to adapter ports when closed
- Nominal dimensions: 13.5" (38cm) H x 4" (10cm) D x 15" (34cm) W

## Double Sided, Single Door Wall Mount Patch Enclosure

**PART NUMBER 1435128-1**



### Fiber Densities

Insert Type	Fiber Density (max)	Duplex Port Density (max)
6-Fiber Adapter Plates	24	12
12-Fiber Adapter Plates or MPO Cassettes	48	24
24-Fiber Adapter Plates or MPO Cassettes	96	48

### Product Facts

- Accepts up to four snap-in adapter plates or two MPO Cassettes (see this Chapter and 2.4, not included)
  - MPO Cassettes in top two slots only
- Top and bottom cable entries feature integral rubber cable grommets
- Integral hasp for use with off-the-shelf padlocks
- Recessed, easy-to-use door latch
- Designed for indoor use
- Door prevents access to adapter ports when closed
- Nominal dimensions: 12" (30.5cm) H x 3" (7.6cm) D x 12" (30.5cm) W

2.6

## Wall/Furniture Mounting Bracket

**PART NUMBER 1777126-1**



Shown with optional cable ring

### Product Facts

- Accepts up to two snap-in adapter plates or two MPO Cassettes (see this Chapter and 2.4, not included)
- Optional Cable Management Ring  
P/N: 1206146-1
- Mounting holes for fastening to TIA rack, wall, or furniture
- Bracket Color: Black
- Compatible with magnetic means

### Fiber Densities

Insert Type	Fiber Density (max)	Duplex Port Density (max)
6-Fiber Adapter Plates	12	6
12-Fiber Adapter Plates or MPO Cassettes	24	12
24-Fiber Adapter Plates or MPO Cassettes	48	24

131

## Double Sided, Double Door Wall Mount Splice and Patch Enclosures



Description	Part Number
Double Sided, Double Door Wall Mount Patch and Splice Enclosures	1278755-1
with Cable Grommets and Cable Glands	1278755-3
with Grommets, Cable Glands and one Splice Tray Holder (1374526)	1278755-4
Optional Lock	559501-2
Replacement Cable Grommets	559496-2

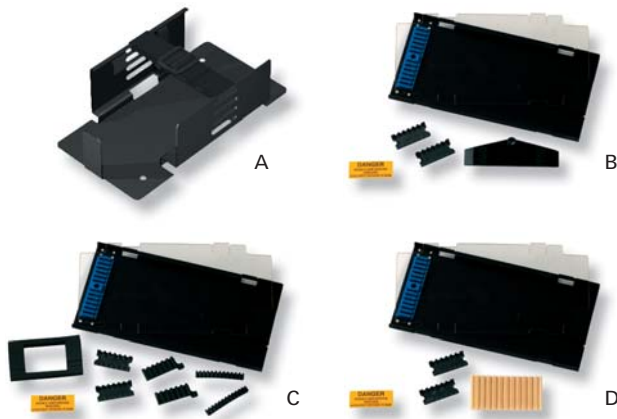
### Fiber Densities/Fiber Splice Capacity

Insert Type	Fiber Count (max)	Duplex Port Density (max)
6-Fiber Adapter Plates	36	18
12-Fiber Adapter Plates or MPO Cassettes	72	36
24-Fiber Adapter Plates or MPO Cassettes	144	72
Spliced Fiber Capacity	48	-

### Product Facts

- Accepts up to six snap-in adapter plates or MPO Cassettes (see this Chapter and 2.4, not included)
- Top and bottom cable entries feature integral rubber cable grommets as listed
- Reversible cable strain relief bracket
- Can hold one splice holder (1374526, below)
  - Splice holder can hold up to four splice trays (listed below)
- Recessed, easy-to-use door latches
- Optional lock package for added security
- Designed for indoor use
- Doors prevent access to adapter ports when closed
- Knockout ports for cable glands or grommets
- Nominal dimensions: 16.5" (40cm) H x 14" (35.5cm) D x 5" (13cm) W

## Splice Accessories for Wall Mount Splice and Patch Enclosure



Description	Included Splice Holder	Figure	Part Number
Splice Tray Holder	-	A	1374526-1
Splice Tray	Fusion	B	559433-2
	Elastomeric & Fusion with Sleeve	C	559433-3
	CORELINK	D	559433-4

### Product Facts

- Splice tray holder can hold up to four splice trays
  - Can mix and match splice trays
- Splice trays hold up to 12 fusion, elastomeric or mechanical splices (select appropriate part number)
  - CORELINK mechanical splices in Chapter 2.2
- Black anodized aluminum construction for durability and improved fiber visibility
- Each splice tray includes clear plastic cover, end caps for fiber retention, and appropriate splice holders

## Double Sided, Single Door Wall Mount Patch Enclosure



### Product Facts

- Pre-loaded with Multimode ST or SC Duplex Adapters
- Integral hasp for use with off-the-shelf padlocks
- Recessed, easy-to-use door latches
- Designed for indoor use
- Door prevents access to adapter ports when closed
- Recessed, easy-to-use door latch
- Nominal dimensions: 12" (30 cm) H x 3" (77cm) D x 12" (30 cm) W

Description		Coupler Color	Fiber Density	Duplex Port Density	Part Number
ST	Multimode	Beige	12	6	1435129-1
			24	12	1435129-2
SC Duplex	Multimode	Beige	12	6	1435130-1
			24	12	1435130-2

## Double Sided, Single Door Wall Mount Splice and Patch Enclosure



### Product Facts

- Pre-loaded with SC Duplex Adapters as listed
- Top and bottom, left and right cable entries feature plastic grommets
- Includes cable management rings
- Includes one splice holder and one splice tray
  - Splice tray can hold up to twelve splices
- Integral hasp for use with off-the-shelf padlocks
- Designed for indoor use
- Door prevents access to adapter ports when closed
- Recessed, easy-to-use door latch
- Nominal dimensions: 12" (30.5cm) H x 3" (7.6cm) D x 12" (30.5cm) W

Description		Coupler Color	Fiber Density	Duplex Port Density	Part Number
SC Duplex	Multimode	Beige	12	6	1435467-3
			12	6	1435467-4
	Single-mode	Blue	6	3	1435467-1
			2	1	1435467-2

2.6