

TWISTED PAIR TOOLS

SL Series Jack Termination Tool	67
110 Punch Down Termination Tools and Accessories	68
610XC Category 6 Cross-Connect 4-Pair Punch Down Tool	69
Palm Grip Tool	69
Cable Strippers	69
Diagonal Cutters	69
Modular Plug Tools	70
Pistol Grip Tool	71
CHAMP Tools	72-73
Twisted Pair Testing	74

Chapter Summary

- All tooling required to install twisted pair connectors found in this catalog

1.7

1.7
Die Set/Tool to Modular Plug Cross-Reference

Modular Plug	Modular Plug Tool Kits			Individual Modular Plug Die Sets for Hand Tool 2-231652-0			
	790163-1	790163-5	1-231666-4	1-853400-0	853400-1	853400-7	853400-8
1479583	-	-	X	X	-	-	-
1479584	-	-	X	X	-	-	-
1479585	-	-	X	X	-	-	-
1479586	-	-	X	X	-	-	-
1479682	X	-	-	-	-	-	-
1479683	X	-	-	-	-	-	-
1479185	-	X	-	-	-	-	-
1479184	-	X	-	-	-	-	-
1375202	X	-	-	-	-	-	-
1375204	X	-	-	-	-	-	-
554169	-	-	X	-	X	-	-
554170	-	-	X	-	X	-	-
554710	-	-	X	-	-	-	X
554720	-	-	X	-	X	-	-
554739	-	-	X	-	X	-	-
555042	-	-	X	-	-	-	X
555174	-	-	X	-	-	X	-
555175	-	-	X	-	-	X	-
555177	-	-	X	-	-	X	-
555417	-	-	X	-	X	-	-
555426	-	-	X	-	-	X	-
557315	-	-	X	-	X	-	-
558530	-	-	X	X	-	-	-
569278	-	-	X	X	-	-	-
569550	-	-	X	X	-	-	-
569552	-	-	X	X	-	-	-
569530	-	-	X	-	X	-	-
569532	-	-	X	-	X	-	-
569542	-	-	X	-	-	-	X
641337	-	-	X	-	-	-	X

SL Series Modular Jack Termination Tool and Accessories



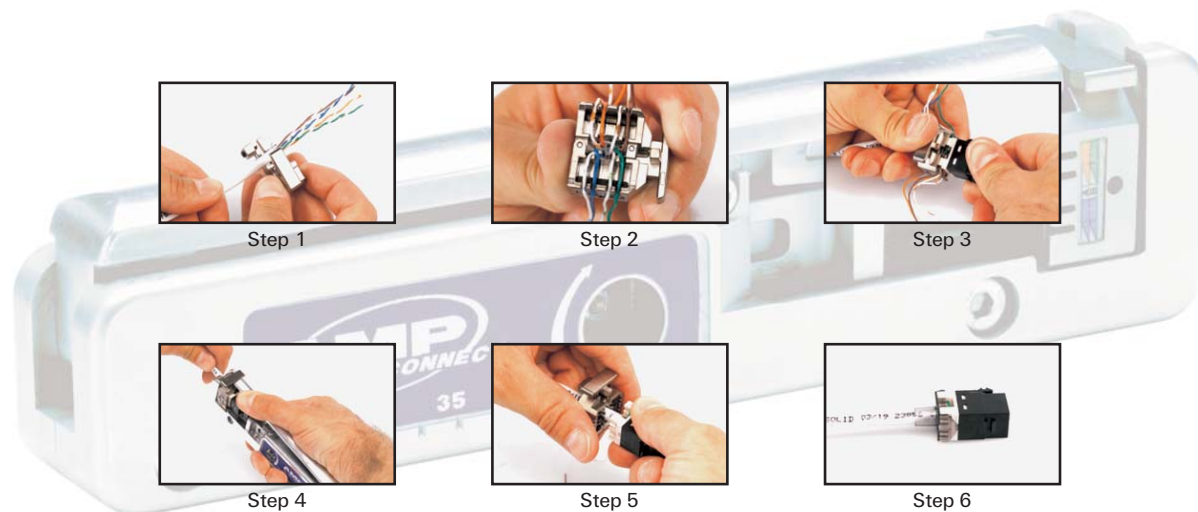
Product Facts

- Termination tool for SL Series Jacks
- Simplifies the termination process, especially for Category 6 Jacks
- Terminates and cuts all 8 conductors at once
- Simplifies lacing process and speeds up terminations
- Tool without Lacing Fixture is for use with SL Series AMP-TWIST 6A Modular Jacks

1.7

Description		Part Number
SL Series Modular Jack Termination Tool	With Lacing Fixture	1725150-1
	Without Lacing Fixture	1725150-3
Replacement Lacing Fixture		1673956-1

SL Series Modular Jack Termination Tool UTP Termination Method



67

1.7

Pro-Installer Twisted Pair Tool Kit
PART NUMBER 1375307-1



Product Facts

- Includes:
 - Installer's knife
 - Pro Impact Tool with extended-life blade
 - Shears
 - AMP NETCONNECT tool pouch
- For use with 110Connect and SL Series Modular Jacks and other 110-Style terminations

110 Punch Down Tools with Blades



Product Facts

- The industry standard termination tool for all 110Connect terminations
- Each tool comes with a blade
- For use with 110Connect and SL Series Modular Jacks and other 110-Style terminations

Description	Figure	Part Number
Pro Impact Tool with Extended-Life Blade	A	1375308-1
Standard Impact Tool with Standard Blade	B	1583608-2
Non-Impact Tool with Standard Blade	C	1583236-1

110 Punch Down Tool Replacement Blades



Product Facts

- Extended-life blades have a lifetime 3 times longer than standard blades

Description	Figure	Part Number
Extended-Life 110 Blade	A	1375309-1
Extended-Life 66/110 Blade	B	1375310-1

610XC 4-Pair Punch Down Tool

PART NUMBER 1725062-1



Product Facts

- For use with AMP NETCONNECT Category 6 610XC Cross-Connects
- Used to:
 - Punch down 4-pairs of conductors at one time
 - Punch down 610XC 4- and 5-Pair Connecting Blocks onto 610XC Wiring Blocks

Palm Grip Tool

PART NUMBER 569949-1



Product Facts

- Fits comfortably into one hand
- Holds one 110Connect Jack, one SL Series 110Connect Jack, or ACO 110 Card Edge Connector for termination

Cable Strippers and Cutters



Product Facts

- Cyclops Stripper suitable for use with UTP Cable
- Coaxial Stripper can be adjusted for use with RG-6, -58 and -59 cable

Description	Figure	Part Number
Cyclops Cable Stripper	A	1375317-1
Coaxial Cable Stripper	B	1490490-1
Diagonal Cutters	C	1116571-1

PRO-CRIMPER III Hand Tool and Die Sets for Twisted Pair Applications



PRO-CRIMPER III
(shown with a die set)

Description	Part Number	
PRO-CRIMPER III Hand Tool	354940-1	
External Strain Relief Clamp	Hand Tool and Die Set	224928-1
	Die Set Only	224928-2

Product Facts

- External Strain Relief Clamp Die Set and Tool are for use with the External Strain Relief Clamp for 8-position Category 3, 5, and 5e Modular Plugs (Chapter 1.2) only

Category 6 Modular Plug Hand Tool and Die Set

Description	Cable O.D.	Part Number	
Category 6 Modular Plug	5 – 6 mm	Hand Tool and Die Set	790163-1
		Die Set Only	790163-2
	6 – 7 mm	Hand Tool and Die Set	790163-5
		Die Set Only	790163-6

Product Facts

- Category 6 Modular Plug Die Set and Tool crimps both the Strain Relief and the Modular Plug contacts at the same time
- Category 6 Modular Plugs in Chapter 1.2

Pro-Installer’s Modular Plug Hand Tool



Product Facts

- Ratchet control provides complete termination cycle
- Interchangeable die sets accommodate all plug sizes
- Die set to Modular Plug cross-reference on page 66
- Clamshell packaging is made of clear plastic and is for point-of-purchase display

Description	Color Dot		Packaging	Part Number
4-Position Handset	Green	Hand Tool and Die Set	Standard	2-231652-3
		Die Set Only	Clamshell	853400-3
4- and 6-Position Line	Blue	Hand Tool and Die Set	Clamshell	2-231652-4
		Die Set Only	Standard	2-231652-8
6-Position Offset Latch	Orange	Hand Tool and Die Set	Clamshell	853400-8
		Die Set Only	Standard	2-231652-6
6-Position Long Body	Violet	Hand Tool and Die Set	Clamshell	853400-6
		Die Set Only	Standard	2-231652-7
8-Position Line	Black	Hand Tool and Die Set	Clamshell	853400-7
		Die Set Only	Standard	2-231652-1
8-Position High Performance	White	Hand Tool and Die Set	Clamshell	2-231652-2
		Die Set Only	Clamshell	853400-1
8-Position High Performance	White	Hand Tool and Die Set	Standard	3-231652-0
		Die Set Only	Clamshell	3-231652-1
			Clamshell	1-853400-0

Pro-Installer’s Modular Plug Hand Tool Kits and Accessories



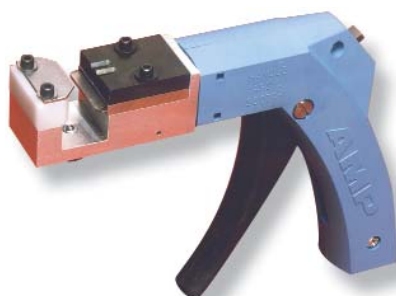
Product Facts

- Each Kit contains Carrying Case, Blade Replacement Kit, Screw Driver, and items as listed
- Modular Plug to Die Set cross reference listed on page 66

Kits Contain

Hand Tool 2-231652-0	High Performance, 8-Position Die Set 1-853400-0	8-Position Line Die Set 853400-1	6-Position, Long Body Die Set 853400-7	4- & 6-Position Line Die Set 853400-8	4-Position Handset Die Set 853400-3	Part Number
X	X	X	X	X	-	1-231666-4
X	-	X	X	X	X	1-231666-3
X	-	X	X	X	-	1-231666-2
X	-	X	-	X	X	1-231666-1
X	-	X	-	X	-	1-231666-0
Carrying Case, Blade Replacement Kit and Screw Driver ONLY						231666-9
Replacement Blade Kit (5 Cutters and 5 sets of Strip Blades)						231662-5
Cutter Blade						856727-1

Pistol Grip Tool for AMP-BARREL Edge Connectors



Product Facts

- The Pistol Grip Tool terminates AMP-BARREL Edge Connectors one pair at a time
- Shortens assembly time by trimming conductors to the proper length and helps maintain proper pair twist for high performance cables
- This tool requires the installation kit to be fitted with a special edge connector, part number 406351-1

Description	Part Number
Pistol Grip Tool with Head	58568-1
Head only	122533-1

1.7

AMP-BARREL Wire Insertion Tools



For Use With:	Figure	Part Number
ACO Edge Connectors	A	556706-1
Wire Insertion Tool for UC Transition Blocks	B	231890-1

Product Facts

- Wire Insertion Tool for Edge Connectors may be used to insert and terminate wires into the special edge connector (Chapter 3) for use with the pistol grip tool
- Wire Insertion Tools for Undercarpet Transition Blocks may be used to insert and terminate wires into AMP-BARREL connectors used in Undercarpet Cabling System Transition Blocks
- Wire Insertion Tools for Undercarpet Transition Blocks cuts off conductor when it is inserted

Portable "Butterfly" Hand Tool (MI-1) for CHAMP 25-Pair Connectors



Description	Part Number
Standard 14-50 Positions, 90° Wire Dress	229378-1
Optional Lacing Fixture	230328-3

Product Facts

- Mass terminates and shears all wires in a single operation
- Wires can be laced in tool or in separate lacing fixture
- Base plate can be bench-mounted

Palm Grip Hand Tool Kits



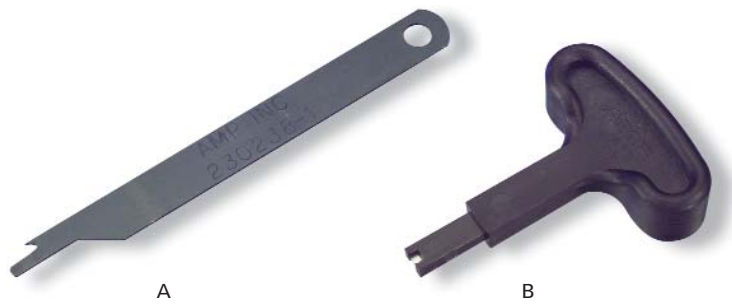
Product Facts

- 14- to 64-Position Kit includes Wire Inserter, all 5 sizes of Index Slides, Cable Clamp, Insertion/Extraction Tool (230238-1), and carrying case
- 50-Position Kit includes wire inserter, 50-position index slide and cable clamp

1.7

Description	Part Number
14- to 64-Position	229764-2
50-Position only	229451-2

Insertion/Extraction Tools



Product Facts

- Used with CHAMP Connectors
- Wire insertion tool is used to insert individual wires when making repairs
- Contact insertion/extraction tool is used to replace damaged contacts

Description	Figure	Part Number
Contact Insertion/Extraction Tool	A	230238-1
T-Handle Wire Insertion Tool	B	229384-1

73

Twisted Pair Testing Tools



A



B



C



D

Product Facts

- 4-Pair UTP Tester:
 - Tests for opens, shorts and wire map (mis-wires, reversals, and split pairs)
 - Auto-on/off feature
 - Battery low indicator
- Butt Set:
 - LCD display shows: on-hook voltage, number dialed, off-hook current, caller ID, stored numbers, etc.
 - Tone and pulse dialing
 - 6-Position modular cord set attachment included
 - Auto-off feature
- Tone Generator:
 - Three built-in tones
 - Auto-off feature
 - Separate talk battery for increased voltage and power for test sets
 - 6-Position modular jack allows multiple cord/test lead sets to be used for different applications
 - Comes with test lead set
- Tone Tracer:
 - Permits wire and cable identification without direct metallic contact
 - Ergonomic design
 - Can be used with any tone generator
 - Quick change tips available

Description	Figure	Part Number
4-Pair UTP Tester	A	1490530-1
Butt Set	B	1490532-1
Tone Generator	C	1490531-1
Tone Tracer	D	1490533-1