

TWISTED PAIR PRODUCTS

1.1 Twisted Pair Cables	4-10
1.2 Connectors, Couplers & Adapters	11-26
1.3 Twisted Pair Cable Assemblies	27-32
1.4 Twisted Pair Patch Panels	33-50
1.5 Cross-Connect Systems	51-60
1.6 DATA Center/SAN Products	61-64
1.7 Twisted Pair Tools	65-73

1.1

Twisted Pair Products



TWISTED PAIR CABLE

Category 6 Cable	5
Category 6A Cable	5
Category 6E Cable	6
Category 5e Cable	7-8
Category 5E (350 MHz) Cable	8
Category 5 Cable	9

Chapter Summary

- Meets or exceeds all TIA/EIA and ISO specifications
- Listed for safety (CMR/CMP)
- Category 5, Category 5e, Category 6, and Category 6A performance
- Variety of colors and packaging available

Twisted Pair Cable Information

1.1

UTP Cable Packaging



WR = Wooden Reels

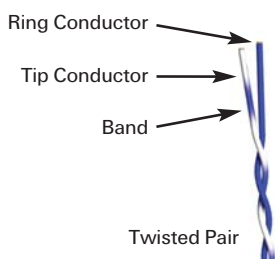


RB = Reel-in-a-Box



PB = Pull Box

Note: Unless otherwise specified, all lengths are 1000 feet (305 meters).
Other lengths and colors available. Call for details. Package types are listed in each chart.



4-Pair Conductor Color Code

Pair	Tip	Ring	Jacket Color
1	Tip	Ring	White
			Blue
2	Tip	Ring	White
			Orange
3	Tip	Ring	White
			Green
4	Tip	Ring	White
			Brown

25-Pair Conductor Color Code

Color Group	Pair	Tip	Ring	Conductor Jacket Color	Band Color
White	1	Tip	Ring	White	Blue
				Blue	White
	2	Tip	Ring	White	Orange
				Orange	White
	3	Tip	Ring	White	Green
				Green	White
	4	Tip	Ring	White	Brown
				Brown	White
	5	Tip	Ring	White	Slate
				Slate	White
Red	1	Tip	Ring	Red	Blue
				Blue	Red
	2	Tip	Ring	Red	Orange
				Orange	Red
	3	Tip	Ring	Red	Green
				Green	Red
	4	Tip	Ring	Red	Brown
				Brown	Red
	5	Tip	Ring	Red	Slate
				Slate	Red
Black	1	Tip	Ring	Black	Blue
				Blue	Black
	2	Tip	Ring	Black	Orange
				Orange	Black
	3	Tip	Ring	Black	Green
				Green	Black
	4	Tip	Ring	Black	Brown
				Brown	Black
	5	Tip	Ring	Black	Slate
				Slate	Black
Yellow	1	Tip	Ring	Yellow	Blue
				Blue	Yellow
	2	Tip	Ring	Yellow	Orange
				Orange	Yellow
	3	Tip	Ring	Yellow	Green
				Green	Yellow
	4	Tip	Ring	Yellow	Brown
				Brown	Yellow
	5	Tip	Ring	Yellow	Slate
				Slate	Yellow
Violet	1	Tip	Ring	Violet	Blue
				Blue	Violet
	2	Tip	Ring	Violet	Orange
				Orange	Violet
	3	Tip	Ring	Violet	Green
				Green	Violet
	4	Tip	Ring	Violet	Brown
				Brown	Violet
	5	Tip	Ring	Violet	Slate
				Slate	Violet

Twisted Pair Cable Temperature Ranges

Category		Riser/Plenum
5, 5e, 6, 6E, 6A	Storage	-4 - 140°F (-20 - 60°C)
	Operating	-4 - 140°F (-20 - 60°C)
	Installation	40 - 140°F (4 - 60°C)

Twisted Pair Cable Standards Information

TIA/EIA Category	ISO/IEC Class	ANSI/TIA/EIA Standard	ISO/IEC Standard	Frequency* MHz	Common IEEE or TIA/EIA Applications	Number of Pairs Used	Bandwidth Mbps
5	D	568-A	11801:1999	100	802.5 - Token Ring	2	4;16;100
					802.3 - 10BASE-T Ethernet	2	10
					802.3 - 100BASE-T Ethernet	2	100
5e	D	568-B	11801:2002	100	802.5 - Token Ring	2	4;16;100
					802.3 - 10BASE-T Ethernet	2	10
					802.3 - 100BASE-T Ethernet	2	100
6	E	568-B	11801:2002	250	802.3 - 1000BASE-T Ethernet	4	1000
					802.5 - Token Ring	2	4;16;100
					802.3 - 10BASE-T Ethernet	2	10
6A	Ea	568-B.2-10	11801:Ed. 2.1	500	802.3 - 1000BASE-T Ethernet	2	100
					802.3 - 1000BASE-T Ethernet	4	1000
					EIA-854 - 1000BASE-Tx Ethernet	4	1000
					802.5 - Token Ring	2	4;16;100
					802.3 - 10BASE-T Ethernet	2	10
					802.3 - 1000BASE-T Ethernet	2	100
					802.3 - 1000BASE-T Ethernet	4	1000
					EIA-854 - 1000BASE-Tx Ethernet	4	1000
					802.3an 10 Gig Ethernet	4	10 Gig

*Note: Frequency refers to maximum frequency that cabling is characterized to.

4

Category 6 UTP Cable



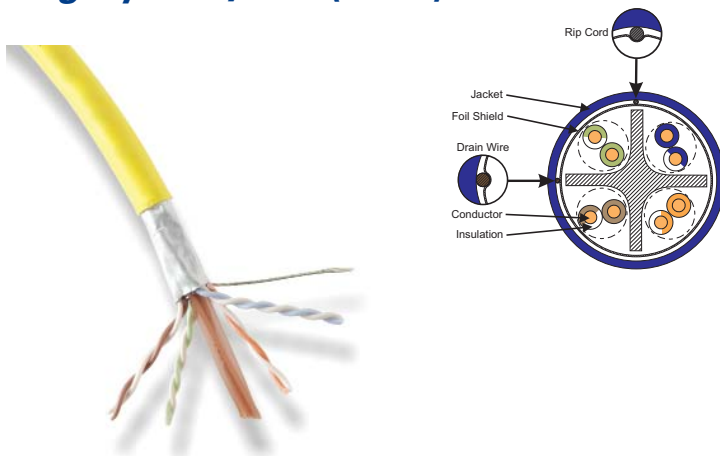
Product Facts

- Meets or exceeds TIA/EIA-568-B Category 6 and ISO Class E 11801: 2002 specifications
- Performance characterized to 600 MHz
- 3 dB NEXT performance above Category 6
- Independently verified by Intertek ETL SEMKO testing services
- Exceeds all requirements for Gigabit Ethernet
- Lead-free (no heavy metals)
- 23 AWG, solid conductors



UL/NEC Ratings	Pair Count	Package	Part Number				Weight lbs/kft	Vp (%nom)	Dimensions (in)	
			White	Gray	Blue	Yellow			Dielectric	Outside
CMR	4	RB	219560-2	219560-4	219560-6	219560-8	26	70	0.042	0.230
		WR	219560-1	219560-3	219560-5	219560-7				
CMP	4	RB	219567-2	219567-4	219567-6	219567-8	24	74	0.040	0.206
		WR	219567-1	219567-3	219567-5	219567-7				

Category 6A F/UTP (ScTP) Cable



Product Facts

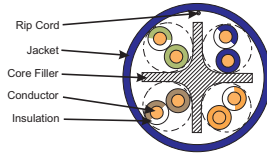
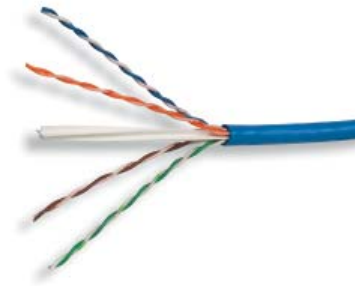
- Meets or exceeds the channel specifications of ANSI/TIA-568-B.2-10 Category 6A and Amendment 1 to ISO/IEC 11801:2002 Class E_A up to 500MHz when used as a component in a properly installed AMP NETCONNECT XG F/UTP channel.
- Independently tested by Intertek ETL SEMKO third party testing services
- Meets or exceeds all requirements for IEEE 802.3an 10 Gigabit Ethernet
- 23 AWG solid conductors
- Lead-free (no heavy metals)



UL/NEC Ratings	Pair Count	Package	Part Number				Weight lbs/mft	Vp (%nom)	Dimensions (in)	
			White	Gray	Blue	Yellow			Dielectric	Outside
CMR	4	WR	4-1499389-1	4-1499389-3	4-1499389-5	4-1499389-7	41.0	72	0.044	0.300
CMP	4	WR	4-1499416-1	4-1499416-3	4-1499416-5	4-1499416-7	41.7	72	0.044	0.300

1.1

Category 6E UTP Cable



Product Facts

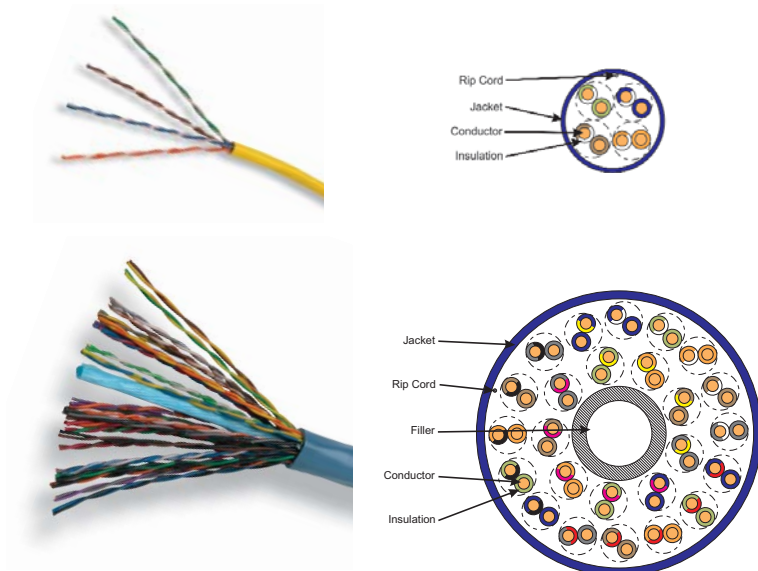
- Meets or exceeds TIA/EIA-568-B Category 6 and ISO 11801: 2002 Class E specifications
- Performance characterized to 600 MHz
- 8 dB NEXT performance above Category 6
- Intertek ETL SEMKO Listed (CMR/CMP)
- Independently verified by Intertek ETL SEMKO testing services
- Exceeds all requirements for Gigabit Ethernet
- Lead-free (no heavy metals)
- 23 AWG, solid conductors



UL/NEC Ratings	Pair Count	Package	Part Number				Weight lbs/kft	Vp (%nom)	Dimensions (in)	
			White	Gray	Blue	Yellow			Dielectric	Outside
CMR	4	RB	1499038-2	1499038-4	1499038-6	1499038-8	34	70	0.042	0.260
		WR	1499038-1	1499038-3	1499038-5	1499038-7				
CMP	4	RB	1499033-2	1499033-4	1499033-6	1499033-8	35	74	0.040	0.260
		WR	1499033-1	1499033-3	1499033-5	1499033-7				

6

Category 5e UTP Cable (200 MHz)



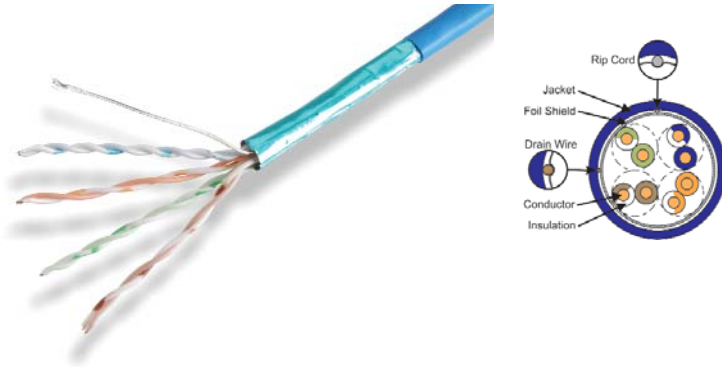
Product Facts

- 4-Pair Cable:
 - Meets or exceeds TIA/EIA-568-B Enhanced Category 5 and ISO 11801: 2002 Class D specifications
 - Independently verified by Intertek ETL SEMKO testing services
 - Performance characterized to 200 MHz
 - 2 dB NEXT performance above Category 5e
 - UL & cUL Listed (CMR/CMP)
 - Meets or exceeds all requirements for Gigabit Ethernet
- 25-Pair Cable:
 - Meets or exceeds TIA/EIA-568-B Enhanced Category 5 and ISO 11801: 2002 Class D specifications
 - Independently verified by Intertek ETL SEMKO testing services
 - UL & cUL Listed (CMR/CMP)
 - 24 AWG, solid conductors
 - Lead-free (no heavy metals)



UL/NEC Ratings	Pair Count	Package	Part Number				Weight lbs/kft	Vp (%nom)	Dimensions (in)	
			White	Gray	Blue	Yellow			Dielectric	Outside
CMR	4	RB	219538-2	219538-4	219538-6	219538-8	24	70	0.037	0.20
		WR	219538-1	219538-3	219538-5	219538-7				
		PB	6-219538-2	6-219538-4	6-219538-6	6-219538-8				
CMR	25	WR	1499418-1	1499418-2	1499418-3	1499418-4	134	69	0.032	0.50
		RB	219513-2	219513-4	219513-6	219513-8				
		WR	219513-1	219513-3	219513-5	219513-7				
CMP	4	PB	6-219513-2	6-219513-4	6-219513-6	6-219513-8	22	74	0.035	0.19
		WR	219513-1	219513-3	219513-5	219513-7				
		WR	1499419-1	1499419-2	1499419-3	1499419-4				
CMP	25	WR	1499419-1	1499419-2	1499419-3	1499419-4	142	72	0.037	0.46
		RB	219513-2	219513-4	219513-6	219513-8				
		WR	219513-1	219513-3	219513-5	219513-7				

Category 5e F/UTP Cable



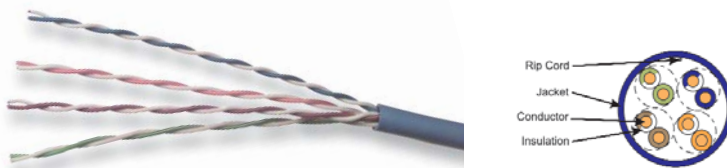
Product Facts

- Meets or exceeds TIA/EIA-568-B Enhanced Category 5 and ISO 11801: 2002 Class D specifications
- Independently verified by Intertek ETL SEMKO testing services
- UL & cUL Listed (CMR/CMP)
- Exceeds all requirements for Gigabit Ethernet
- 24 AWG, solid conductors
- Lead-free (no heavy metals)



UL/NEC Ratings	Pair Count	Package	Part Number				Weight lbs/kft	Vp (%nom)	Dimensions (in)	
			White	Gray	Blue	Violet			Dielectric	Outside
CMR	4	WR	1499171-1	1499171-3	1499171-5	1-1499171-7	31	72	0.041	0.240
CMP	4	WR	1499172-1	1499172-3	1499172-5	-	29	72	0.042	0.219

Category 5E UTP Cable (350 MHz)



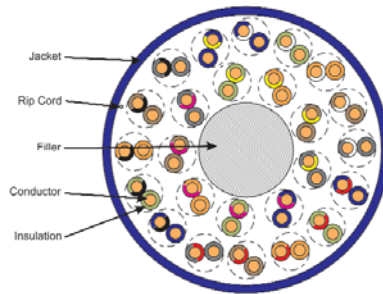
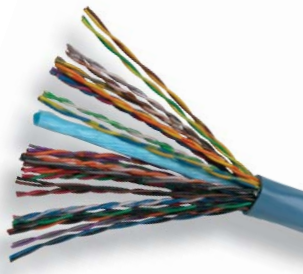
Product Facts

- Meets or exceeds TIA/EIA-568-B Enhanced Category 5 and ISO Class D 11801:2002 specifications
- Independently verified by Intertek ETL SEMKO testing services
- Performance characterized to 350 MHz
- 5 dB NEXT performance above Category 5E
- UL & cUL listed (CMR/CMP)
- Gigabit Ethernet zero bit error rate independently certified by Intertek ETL SEMKO testing services
- Lead-free (no heavy metals)
- 24 AWG, solid conductors



UL/NEC Ratings	Pair Count	Package	Part Number				Weight lb/kft	Vp (%nom)	Dimension (in)	
			White	Gray	Blue	Yellow			Dielectric	Outside
CMR	4	RB	57826-2	57826-4	57826-6	57826-8	24	70	0.037	0.20
		WR	57826-1	57826-3	57826-5	57826-7				
		PB	6-57826-2	6-57826-4	6-57826-6	6-57826-8				
CMP	4	RB	57825-2	57825-4	57825-6	57825-8	22	74	0.035	0.19
		WR	57825-1	57825-3	57825-5	57825-7				
		PB	6-57825-2	6-57825-4	6-57825-6	6-57825-8				

Category 5 UTP Cable



Product Facts

- Meets or exceeds all TIA/EIA-568-A Category 5 and ISO 11801 Class D requirements
- UL & cUL Listed (CMR/CMP)
- Independently verified by Intertek ETL SEMKO testing services
- Lead-free (no heavy metals)
- 24 AWG, solid conductors



UL/NEC Ratings	Pair Count	Package	Part Number				Weight lb/kft	Vp (%nom)	Dimensions (in)	
			White	Gray	Blue	Yellow			Dielectric	Outside
CMR	25	WR	57814-1	57814-2	57814-3	57814-4	124	69	0.039	0.48
CMP	25	WR	57815-1	57815-2	57815-3	57815-4	124	72	0.037	0.41



1.1

10