

August 22nd, 2008
Issue Number 1

What's Inside:

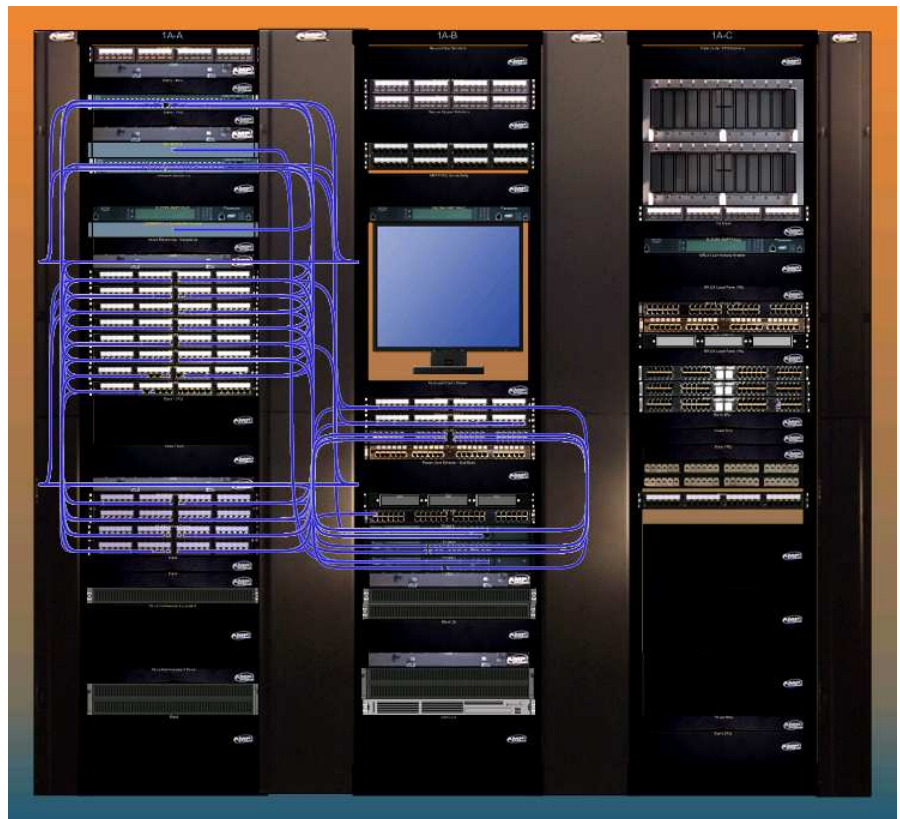
- 1 Virtual Wiring Closet (VWC)
Template Package

In Brief:

Tyco Electronics is pleased to release a VWC-II template package for the AMP NETCONNECT AMPTRAC IIM system.

The package contains sixty-four (64) new Virtual Wiring Closet (VWC) templates to provide an accurate, real-world look of the closet and its contents, which helps reduce errors and miscommunication in the field.

The robust AMP NETCONNECT intelligent product set is one of the broadest in the world, and makes AMPTRAC the Intelligent Infrastructure Management System of choice.



Above, is the finished view of a VWC II closet using the new templates. The new 'look' provides a realistic view of the actual components, making the virtual representation closer to the real world.

AMPTRAC Product Virtualized

Tyco Electronics is pleased to announce the release of the AMPTRAC VWC-II template package, which contains and introduces sixty-four (64) AMP NETCONNECT templates to the IM software suite. The VWC-II templates are used to depict the virtual layout of the panels and equipment documented within the telecommunications rooms (TR). The new templates have a realistic look to them since they are based on actual photo images and dimensions of the equipment they represent. The look and feel of the

new VWC helps reduce errors and improves coordination of change control. In addition to the front view management, the VWC-II allows rear view management of the racks and cabinets, which enable the documentation of rear mounted equipment and power supply connectivity to outlet panel/strips. The use of intelligent power strips facilitates documentation of the load or draws of each power supply in real time within the CMDB and is reflected in the VWC.

Accurately documenting and managing infrastructure assets includes space management, environmental conditions, patching configurations, power utilization, device locations configurations and IT security/access concerns.

The AMPTRAC IIM system includes and details a broad, robust product set that supports monitoring of copper and fiber cabling infrastructures as well as documenting environmental conditions (Power, temperature, moisture, etc.) within the facility.

The VWC Template Package includes the AMP NETCONNECT standard North American intelligent products along with our global and modular product sets to include MRJ21, MPO, Hi-D, ACO and cable management brackets (CMB).

Detailed list of templates included are:

1933327-1	AMPTRAC 24 port UTP Patch Panel Flat	1591099-1	Switch: 24 port SNMP (Current)
1933328-1	AMPTRAC 48 port UTP Patch Panel Flat	1591038-1	Switch: 8 port SNMP managed
1933331-1	AMPTRAC 24 port STP Patch Panel Flat	0-1711326-1	AMPTRAC ACO Panel: 16 slot, 2RU bottom sensor"0-
1933332-1	AMPTRAC 48 port STP Patch Panel Flat	1711326-1	AMPTRAC ACO Panel: 16 slot, 2RU top sensor
1933323-1	AMPTRAC Multimedia Panel: 4 AMPTRAC slots	1394574-1	AMPTRAC ACO Panel: 24 slot, 2RU black
1933324-1	AMPTRAC Multimedia Panel: 8 AMPTRAC slots	0-1394574-1	AMPTRAC ACO Panel: 24 slot, 2RU gray
1777029-2	AMPTRAC MRJ21, 24 port Panel flat	N/A	AMPTRAC ACO Insert: Single RJ45, Vertical, gray
1777042-1	AMPTRAC MRJ21, 48 port Panel flat	N/A	AMPTRAC ACO Insert: Single RJ45, Vertical, black
1777041-1	AMPTRAC MRJ21, 48 port Panel flat	N/A	AMPTRAC ACO Insert: Single RJ45, Horizontal, gray
1777053-1	AMPTRAC MRJ21, 48 port Panel Angled	N/A	AMPTRAC ACO Insert: Single RJ45, Horizontal, black
1933443-1	AMPTRAC Fiber Drawer, Flat, loaded LC	N/A	AMPTRAC ACO Insert: Dual RJ45, Vertical, gray
1933443-1	AMPTRAC Fiber Drawer, Flat, 4 AMPTRAC slots	N/A	AMPTRAC ACO Insert: Dual RJ45, Vertical, black
1435593-2	AMPTRAC Fiber enclosure, 12 AMPTRAC slots	N/A	AMPTRAC ACO Insert: Dual RJ45, Horizontal, gray
0-1671114-4	RMPE Panel, 3 slots, snap-in	N/A	AMPTRAC ACO Insert: Dual RJ45, Horizontal, black
1499647-1, 1499648-1, 1499649-1	AMPTRAC MPO: 6 duplex LC	1711278-1	EMEA 24 port STP Patch Panel, 1RU, AMPTRAC front
1435594-2, 1435672-2, 1435673-2	AMPTRAC MPO: 6 duplex MTRJ	0-1711148-4	EMEA 24 port STP Patch Panel, 1RU, AMPTRAC rear
1933421-1	AMPTRAC MT-RJ interface module	1711278-2	EMEA 24 port STP Patch Panel, 1RU, non-AMPTRAC
1933420-1	AMPTRAC Duplex LC interface module	1-1671169-1	AMPTRAC Fiber Drawer, Hi-D Angled: Loaded LC
1435657-1	AMPTRAC Duplex SC Snap-in module, vertical"	1671055-1	Fiber enclosure, Hi-D, unloaded, 12 snap-in slots
1435657-1	AMPTRAC Duplex SC Snap-in module, horizontal"	1-1671136-2	AMPTRAC 24 port STP Patch Panel, 1RU, Hi-D angled
N/A	AMPTRAC Loaded RJ45 UTP six pack module	1933559-1	Equipment Rack, 19 inch, 2 Post, Height-84 inch, 45RU
N/A	AMPTRAC Loaded RJ45 STP six pack module	Demo Rack	19 inch, 2 Post, Height - 14 inches, 8RU
3-1591306-1	AMPTRAC Analyzer: 336 port	1933534-1	CMB, Double-sided, 48U (84 inches), Depth 8.5 inches, Width 6 inches
4-1591306-1	AMPTRAC Analyzer: 168 port	1933535-1	CMB, Double-sided, 48U (84 inches), Depth 8.5 inches, Width 10 inches
1591058-1	Switch: 24 port SNMP (Discontinued)	1933536-1	CMB, Double-sided, 48U (84 inches), Depth 8.5 inches, Width 12 inches
		1933530-1	CMB, 1U, single-sided, 5.5 inch Deep
		1933531-1	CMB, 1U, double-sided, 5.5 inch Deep
		1933532-1	CMB, 2U, single-sided, 5.5 inch Deep
		1933533-1	CMB, 2U, double-sided, 5.5 inch Deep
		1933561-1	CMB, 3U, single-sided, 5.5 inch Deep
		1933562-1	CMB, 3U, Double-sided, 5.5 inch Deep
		556965-1	Blank Panel: 1U
		556965-2	Blank Panel: 2U
		556965-3	Blank Panel: 3U
		556965-4	Blank Panel: 4U
		1348876-4	Fiber Enclosure: 1U, 3 slot for Snap-in modules
		559542-2	Fiber Enclosure: 2U, 4 slot for Snap-in modules
		559614-2	Fiber Enclosure: 3U, 8 slot for Snap-in modules
		559552-X	Fiber Enclosure: 4U, 12 slot for Snap-in modules